

## COMPANY'S PROFILE



  
**Yetosol**  
ASSOCIATES

 2nd Floor 24/28 Strachan Opp Lapal House,  
Igbose, Lagos Island.

 [info@yetosol.com](mailto:info@yetosol.com), [onayemi@yetosol.com](mailto:onayemi@yetosol.com)

 +234(0)7039171254, +234(0)8058854821



## **TABLE OF CONTENT**

- Introduction
- Vision Statement
- Mission Statement
- Quality statement
- Company Services
- Personnel portfolio
- Corporate Governance
- Environmental Health and Safety Policy
- Projects
- Corporate Directory



## **INTRODUCTION**

Yetosol Associates Company was incorporated as a company in Nigeria in 2016 (RC553088) but has been in existence since 2006. The company has developed steadily from a small crew company at inception into a professional construction firm providing quality construction services at fair and market competitive prices to diverse range of medium class and top tier clients across the nation. The company started with managing just a few projects but has developed so much capacity such that it now manages multiple projects in different states of the country with quality project delivery.

Our guiding principles are quality, integrity, team work, safety, timely project delivery and clients satisfaction. With our team of experienced, dedicated and proactive professionals and artisans, we continually offer value adding services in the building construction industry. Our quest for excellence, keeping up with industry trends and adhering to standards has continually aided the growth of our firm through repeat and referral clients.





## *Vision Statement*

“ To be foremost building construction firm in Nigeria adopting professionalism and dedication for excellent project delivery. ”



## *Mission Statement*

*Our Mission is to deliver projects of the highest quality par excellence using the latest technology to add value for clients through innovation, foresight and excellent performance.*

*To provide and affordable and quality housing for all and sundry.*

*To maintain a team of profesionales that are motivated and dedicated to the quality improvement process thus ensuring a cost effective project execution.*



## QUALITY STATEMENT

Yetosol Associates Company has a commitment to quality project and services delivery hinged on and influenced by our principles of adhering to standards and best practices in the building construction industry, adapting modern technology and skilled work-force for our projects and rendering customer-focused services which will bring our client's imagination into reality.

Our dedication to a culture of excellence has consistently helped our firm to exceed the expectations of our valued clients.





## | COMPANY SERVICES

- Building Construction
- Facilities Management
- Civil Works
- Redevelopment & Retrofitting



## COMPANY SERVICES

### **BUILDING CONSTRUCTION**

Just as our trademark and slogan states **“Imagination + Reality”** every building project starts as a concept in the mind of the client which is transformed by an architect into a plan all of which can only be brought to reality by an expert in building construction. This is a summary of what we do in YETOSOL, turning into reality the imagination of our clientele and consultants. We make the drawings on paper evolve into the desired shelter of our clients by paying attention to details, adhering to standard practices in the building construction industry and giving our projects the best of finishes that transcends the imagination of our clients.



## CIVIL WORK

Civil Works are an essential part of every building project from the landscaping to the construction of sewage treatment systems to drainages and other works needed for the efficient running of the Building; we provide a total solution to endure the delivery of our projects.





## **FACILITIES MANAGEMENT**

There is no culture of excellence without a sustained maintenance culture: to ensure the longevity, serviceability and beauty of our projects, our facilities management unit ensures that our projects are always in good shape to serve the need of our clients to the optimum. The maintenance works ranges from the electrical and mechanical works, heating-Ventilation-air conditioning (HVAC), civil works and all other routine works need to keep the structure intact.





## **REDEVELOPMENT AND RETOFITTING**

The built environment is a very dynamic environment with the introduction of new concepts and designs, improved interiors, fittings and finishes; modifications, redevelopments and retrofittings are needed to keep the building in the trending style and also ensure better comfort for our client. These value adding services is part of what we engage in at Yetosol ensure our clients get their property to serve their needs.



## PERSONNEL PORTFOLIO

### ONANIBOSI ONAYEMI SEGUN

(Bsc, MNSE, MNICE, C.ENG)

*Managing Partner/projects Manager*

Bachelor of science in Civil Engineering with specialization in civil/structural and highway engineering. this young and dynamic engineer has a natural aptitude for computer aided analysis, design and project supervision. He has a quest for excellent project delivery and has experience in project planning and execution. He has completed several building projects, highway, Factory and bridges Projects. He is accustomed with heavy loads and ability to take on multiple tasks simultaneously and to produce high quality results despite deadly pressure. He is also versatile in the use of Computer aided design softwares (Autocad, Civil3D, Revitt, Orion, Etabs, Staadpro, prokon and robot.)



## PERSONNEL PORTFOLIO (Cont.)

### **AROMIWURA ADEDAMOLA OLUWASEUN** (Bsc, Msc, MNSE, MNICE, C.ENG)

*Partner/projects Manager*

He is a graduate Bachelor of Engineering in civil Engineering, Covenant University, Ogun State, Nigeria (2010). masters of science in Structural Engineering with consultancy skills, Newcastle university, Newcastle Upon-Tyne, UK (2012). He is an energetic and customer-focused civil engineering professional with specialization in the completion of high quality construction projects. With the application of knowledge in construction processes, engineering, scheduling, estimating, and structural designs, I seek to deliver successful project outcomes. Detail-oriented, he ensures critical project data is fully utilized when making decisions to yield optimal results in profitability and operational efficiency. He is also versatile in the construction of Tank forms and general construction. He is also versatile in the use of several softwares which is not limited to Autocad, Civil3d, Orion 18, Staadpro and scale.





# Setosol

ASSOCIATES





## PERSONNEL PORTFOLIO (Cont.)

### **ADELEYE OLUWASEUN ADEMOLA** **Bsc, MSc,MNSE, MNICE**

*Projects Director*

He is a graduate of Civil Engineering from the Federal University of Agriculture, Abeokuta and he also has an Msc in Construction Management (UNILAG). He has wealth of experience in design and construction supervision of low rise building to High rise Buildings, Factory and Highway. He has successfully completed quite a number of projects in Lagos and other parts of the Country. He is also versatile in the use of Several Cad Design softwares such as Autocad, Microsoft Office, Orion, Staadpro and Prakon, he has developed much capacity to paying attention to details and quality project execution.



**PERSONNEL PORTFOLIO** (Cont.)**AJIBOYE  
JOLAJESU O.***Engineering Manager*

She has B.Eng Civil engineering (Second Class Upper Division) at Covenant University Ota, Ogun State, Nigeria. She also has M.Sc. water and waste Engineering at WEDC, Loughborough University, Uk. She is very versatile in the design of water supply network and dam design. Her wealth of experience spans over design of structures, supervision and project management she handles projects with dedication and professionalism. She has been involved with several projects from inception to delivery.



## **PERSONNEL PORTFOLIO** (Cont.)

### **AWONIYI RAPHEAL HND**

*Builder/Facility Manager*

A Builder by training and an experienced facility manager, he manages the maintenance the part of the firm's projects ensuring the projects are serving intended purposes. He graduated from the Federal Polytechnic Ado Ekiti, Ekiti.



**PERSONNEL PORTFOLIO** (Cont.)**ADEKOYA****ADEYEMI ABOLANLE**

*Procurement Manager /  
Quantity Surveyor*

Adekoya is a dynamic young man with over five years' experience in Quantity Survey Profession. He holds a National Diploma Ede and a B.Tech degree (Second class upper division) from the university of technology, Minna, all in quantity Surveying. He also holds a Master in Construction Management (Msc.) from the University of Lagos. Over the years, he has been involved in preparation of Bill of Quantities for several Projects in the western region of Africa. He is presently a Probationer member of the Nigeria institute of Quantity surveyor (NIQS) and also a graduate Member of Management (NIM).





  
**Setosol**  
ASSOCIATES



## **CORPORATE GOVERNANCE**

The priority of Yetosol Associates Company (Hereinafter “Yetosol” or the “Company”) is to manage the company for profitable long term growth having efficiency and quality as key terms for development. Yetosol believes that good corporate Governance is a critical factor in achieving business success. The company’s management therefore has put in place measure that ensures our business is conducted in accordance with global best practices and with good Corporate governance



## **CORPORATE GOVERNANCE: Objectives & Ethical principles/Culture**

### **OBJECTIVES**

- \* To engage in the business of construction services
- \* To provide an affordable and quality housing for all and sundry
- \* To maintain a team of professionals that are motivated and dedicated to the quality improvement process thus ensuring a cost effective project execution
- \* To become the most effective indigenous construction firm in Nigeria.
- \* To acquire or partner with any similar business which may enhance the value of the company.





## **ETHICAL PRINCIPLES/ CULTURE**

**Safety:** We ensure that a safe and injury free workplace is created and we make accidents prevention, our prime concern for all employees and customers; as well as the prevention of damage to property and equipment.

**Quality & Standard:** We ensure that we give our customers the products and services they want, that is, the products and services that fit their purpose and that match their expectations and preferences.

**Professionalism:** we ensure that each personnel is guided with ethics in the workplace, and that our staffs do their job with sincerity and with genuine interest and honesty. We also ensure that individuals maintain professional etiquette within the company environ as well as on project sites.

**Integrity:** We ensure fairness in our decision making process and we act in the best interest of our customers/clients. we also ensure that all staffs treat themselves with respect



## **ENVIRONMENTAL, HEALTH AND SAFETY POLICY**

### BACKGROUND

In accordance with the Employee's charter, Yetosol is committed to an operating philosophy based on fairness and concern for employees, customers and the communities in which it operates. To this end, Yetosol's objective is to be an industry leader in health, safety and environmental practices in all of its operations with the intention, through technological innovation and process efficiencies, to minimize the impact of its operations on the environment and to provide safe and healthy working conditions. The following principles are fundamental to achieving the forgoing objectives:





## **ENVIRONMENTAL, HEALTH AND SAFETY POLICY**

A) To comply with and exceed where possible, all applicable health, safety and environmental laws and regulations and to conform to its internal standards based on generally accepted environmental practices and established industry codes of practice;

B) To regularly evaluate and monitor past and present business activities impacting upon health, safety and environmental matters;

C) **TO**

i. Improve the efficient use of natural resources, including energy; and

ii. Minimize waste streams and emissions.

D) To ensure that a systematic review program is implemented and monitored at all times for each of its operations, with a goal of continual improvement in health, safety and environmental matters

All employees shall be made aware of the foregoing objectives and principles and shall be required to incorporate and abide by the spirit of such objectives and principles in carrying out their responsibilities. Yetosol is committed to providing the necessary support to ensure that the foregoing objectives and principles objectives and principles are fully achieved. Profession.





  
**Yetosol**  
ASSOCIATES



# ***RECENTLY COMPLETED GEOTECHNICAL SERVICES***

- Installation of 216 numbers of piles at PLOT J73, Banana Island
- Installation of 80 number of piles at Sangotedo in Ajah
- Soil investigation at HLS Estate, Ogudu GRA, Lagos.
- Soil investigation at Millenium estate, Gbagada
- Installation of 102 numbers of 450mm piles at block 69, plot 24 & 25 Lekki Penninsula Scheme, Ikate.



# ***Banana Island Project***



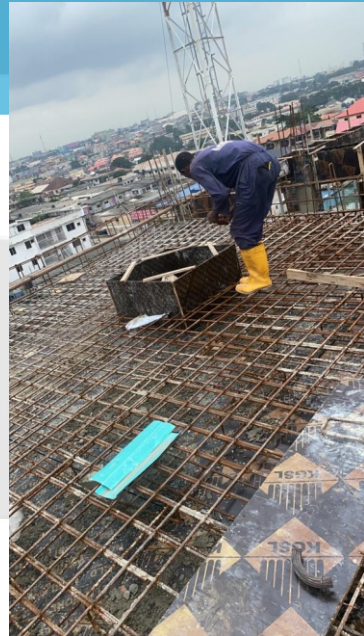




**Proposed Office Development for Everyday kitchen Limited at Nike Art Gallery road Lekki**



# PROPOSED OFFICE DEVELOPMENT FOR HASSLAN PROPERTIES AT 42 ALLEN AVENUE IKEJA







# PROPOSED RESIDENTIAL DEVELOPMENT AT NOBLE STREET, YABA

etoso ASSOCIATES





**PROPOSED DEVELOPMENT FOR SANDHURST PROPERTIES**





**PROPOSED SYMPHONY COURTS FOR  
BLACKCOUNTRY LIMITED AT ROYAL GARDEN ESTATE**



# PROPOSED CHUOKO SUITES AT ADEBISI OGUNNUYI CRESCENT LEKKI PHASE 1







**PROPOSED TERRACE HOUSES AT  
H.L.S ESTATE OGUDU GRA**



# PROPOSED COUNTRY HOME AT ILISHAN





## **RECENTLY COMPLETED REDEVELOPMENT, RETROFITTING AND RENOVATION PROJECTS:-**

- Remodelling and renovation of gas stations for Ibile Oil and Gas in Ikorodu and Amuwo Odofin.
- Reconstruction of filling station at Alagbado for Ibile Oil & Gas.
- Reengineering of a 4 floor building at 242, Agege Motor Road, Mushin





## RECENTLY COMPLETED CIVIL WORKS

- Recognisance survey for the construction of Agbowa-Ode Remo road
- Design and Construction of Drainage Network at Ajegunle Apapa.

